

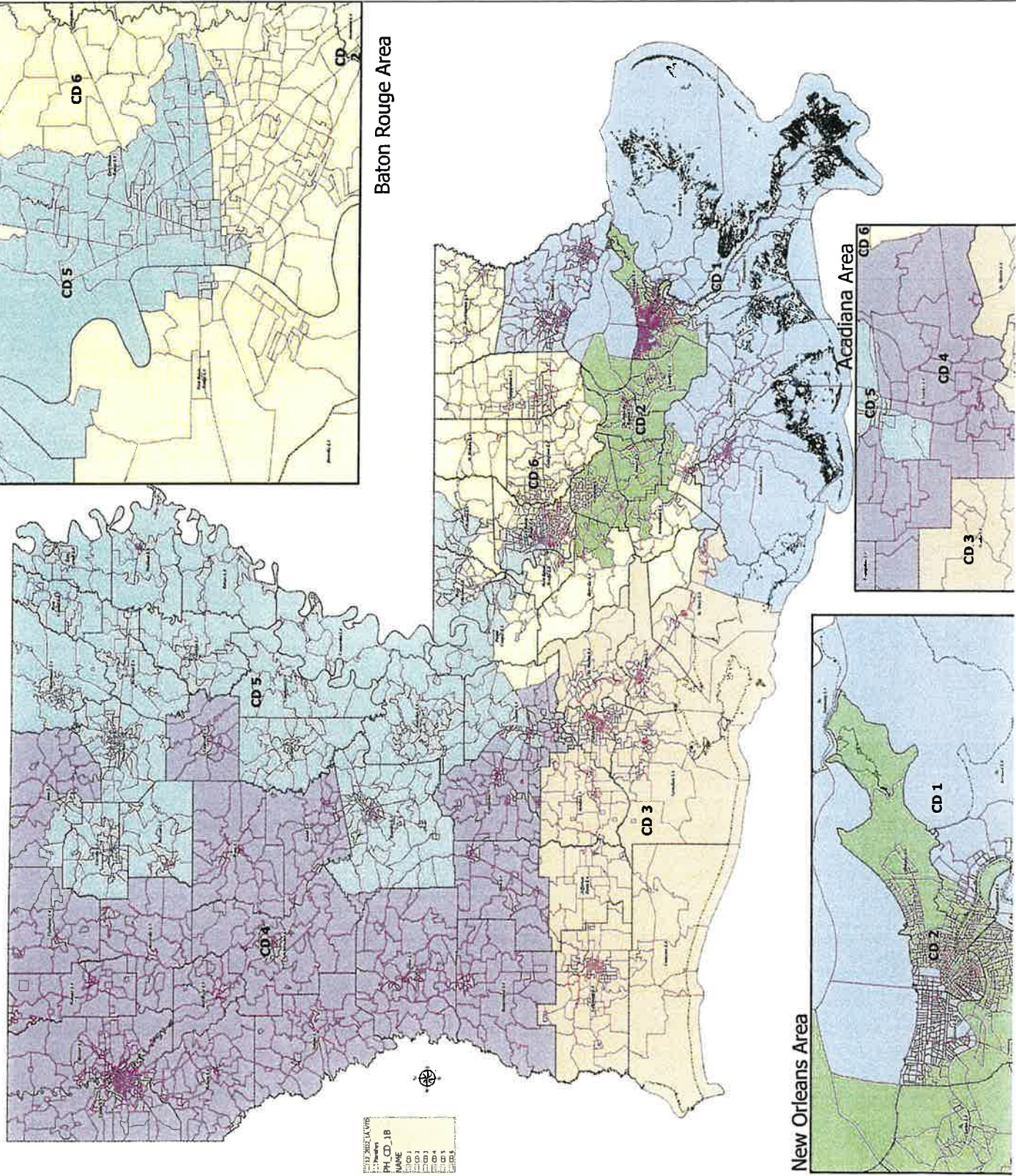
PAUL LOY HURD, APLC
(A Professional Law Corporation)
 1896 Hudson Circle, Suite 5; Monroe, Louisiana 71201
 P. O. Box 15556; Monroe, Louisiana 71207-15556
 Tel: (318) 323-3838 Fax: (318) 330-9390
 Paul Loy Hurd, Attorney At Law & President
 Email: paul@paulhurdlawoffice.com

**2024 FIRST EXTRAORDINARY SESSION OF LOUISIANA LEGISLATURE
 CONGRESSIONAL REDISTRICTING**

COMPARISON BETWEEN SB8 AND BALANCED PLAN

Districting Principles:	Balanced Plan	SB8
I. Traditional Cultural Regions:	Complies	Violates
II. Prior Congr. Districts:	Complies	Violates
III. Continuity of Existing Districts:	Complies	Violates
IV. Majority-Minority Dist. #2 Distr. #5 or #6	Complies VAP W 39.2% VAP W48.8%	Complies VAP W 37.64% VAP W 39.4
V. Racial Division City/Parish	Narrow/Minimal	Predominates
VI. Urban vs. Rural Districts:	Complies	Violates
VII. Compactness (Geography)	Complies	Violates
VIII. Compactness (Functional) (Gov't Regions; Gov't Service)	Complies	Violates
IX.. Contiguousness	Complies Narrow (1)	Violates Narrow (8+)

**Louisiana Congressional Districts
Balanced Plan
2022 Precincts**

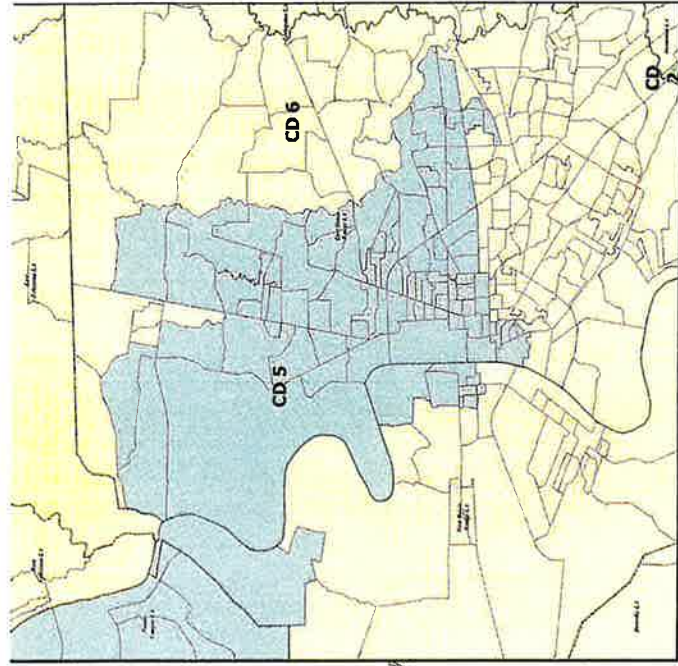


NAME	PH_CD_1B
CD 1	1
CD 2	2
CD 3	3
CD 4	4
CD 5	5
CD 6	6

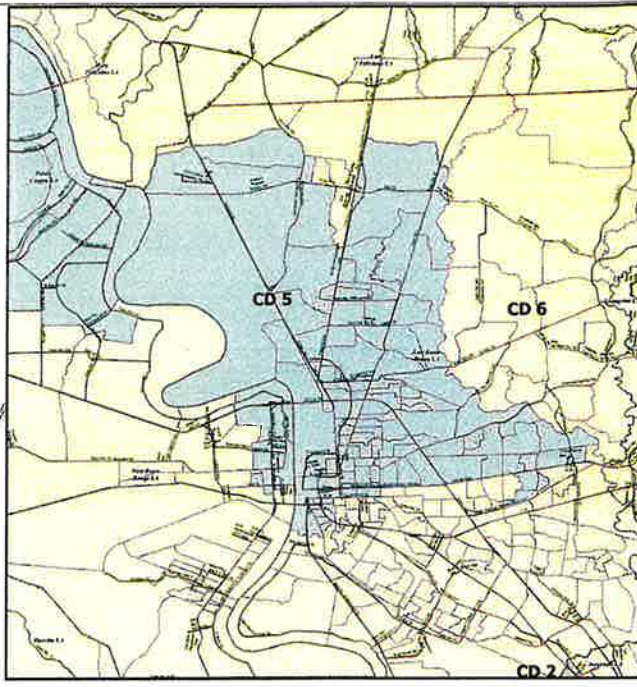
Baton Rouge Area

New Orleans Area

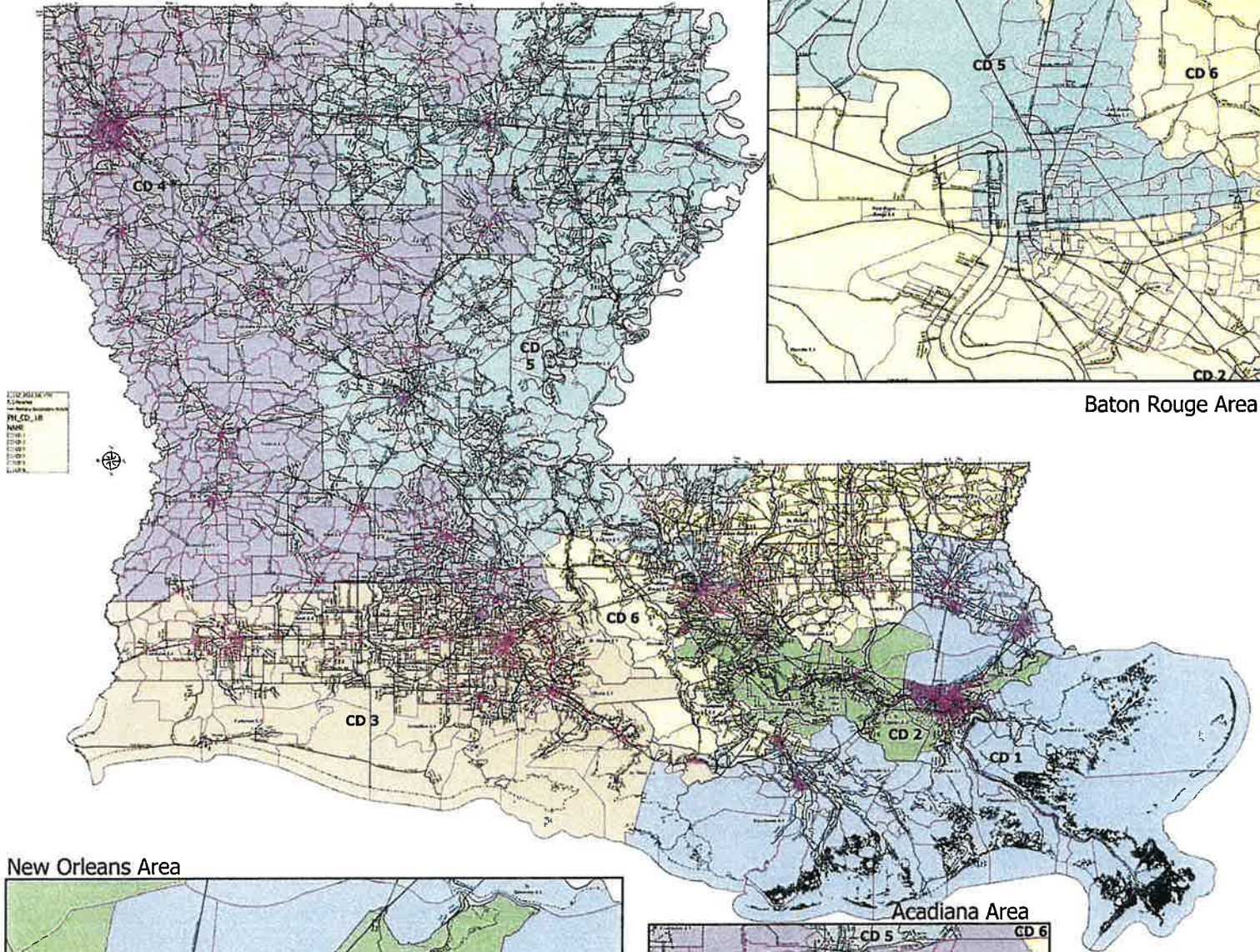
Acadiana Area



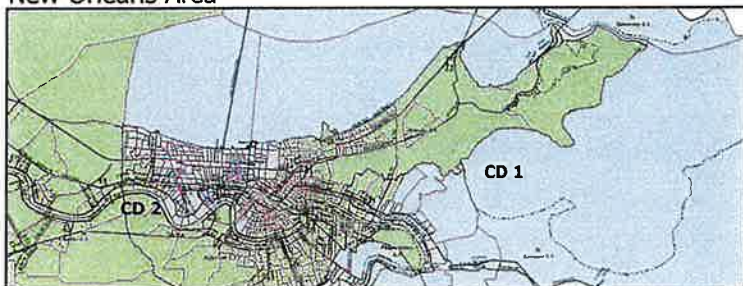
Louisiana Congressional Districts
Balanced Plan
2022 Precincts



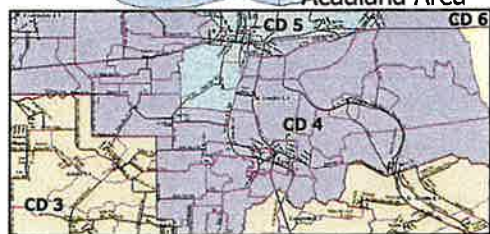
Baton Rouge Area



New Orleans Area

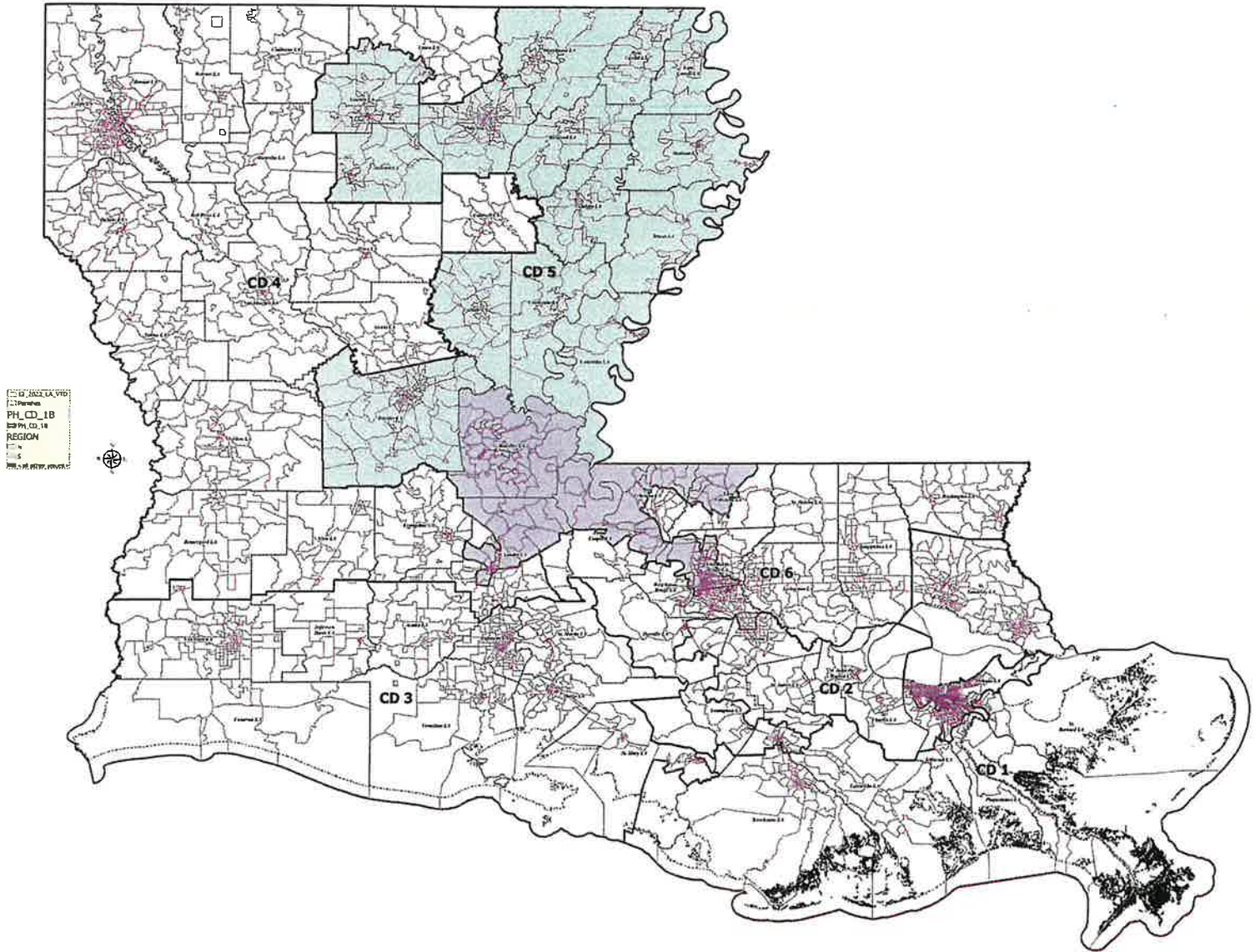


Acadiana Area



CD	CD 1	CD 2	CD 3	CD 4	CD 5	CD 6
Color	Light Blue	Green	Light Blue	Purple	Light Blue	Yellow
PH	PH 1	PH 2	PH 3	PH 4	PH 5	PH 6
NAME	PH 1	PH 2	PH 3	PH 4	PH 5	PH 6
CD	CD 1	CD 2	CD 3	CD 4	CD 5	CD 6
PH	PH 1	PH 2	PH 3	PH 4	PH 5	PH 6
NAME	PH 1	PH 2	PH 3	PH 4	PH 5	PH 6

Louisiana Congressional Districts
Balanced Plan by Region
2022 Precincts



1A

VTD Assignment	CD	Parish	TOT_POP	TOT_WHITE	TOT_BLACK	TOT_ASIAN
Assumption LACD 1	CD 1	Assumption LA	1922	1518	86	25
Jefferson LACD 1	CD 1	Jefferson LA	240348	155363	31088	11814
Lafourche LACD 1	CD 1	Lafourche LA	54346	42118	4994	606
Orleans LACD 1	CD 1	Orleans LA	48050	38141	3973	1929
Plaquemines LACD 1	CD 1	Plaquemines LA	23515	14287	5428	1317
St. Bernard LACD 1	CD 1	St. Bernard LA	31602	18993	7953	885
St. Mary LACD 1	CD 1	St. Mary LA	4799	2404	793	346
St. Tammany LACD 1	CD 1	St. Tammany LA	264570	196641	38643	5774
Tangipahoa LACD 1	CD 1	Tangipahoa LA	0	0	0	0
Terrebonne LACD 1	CD 1	Terrebonne LA	107466	68779	22400	1713
Ascension LACD 2	CD 2	Ascension LA	88767	54630	25667	1118
Assumption LACD 2	CD 2	Assumption LA	6193	2624	3376	23
Iberville LACD 2	CD 2	Iberville LA	11776	4417	6454	94
Jefferson LACD 2	CD 2	Jefferson LA	200433	65572	95129	11210
Lafourche LACD 2	CD 2	Lafourche LA	5861	5405	197	12
Orleans LACD 2	CD 2	Orleans LA	335947	88321	214996	10927
St. Bernard LACD 2	CD 2	St. Bernard LA	12162	5504	4356	496
St. Charles LACD 2	CD 2	St. Charles LA	52549	33550	13928	837
St. James LACD 2	CD 2	St. James LA	20192	9973	9762	60
St. John the Baptist LACD 2	CD 2	St. John the Baptist LA	42477	13877	25196	403
Acadia LACD 3	CD 3	Acadia LA	57576	44480	10864	238
Calcasieu LACD 3	CD 3	Calcasieu LA	216785	139772	59386	4702
Cameron LACD 3	CD 3	Cameron LA	5617	5232	125	30
Iberia LACD 3	CD 3	Iberia LA	69929	39206	24556	2123
Jefferson Davis LACD 3	CD 3	Jefferson Davis LA	32250	25066	5837	183
Lafayette LACD 3	CD 3	Lafayette LA	241753	153363	65136	6454
St. Landry LACD 3	CD 3	St. Landry LA	1395	1144	197	13
St. Martin LACD 3	CD 3	St. Martin LA	49004	30830	15711	577
St. Mary LACD 3	CD 3	St. Mary LA	44607	24545	15198	489
Vermilion LACD 3	CD 3	Vermilion LA	57359	44477	8810	1447
Allen LACD 4	CD 4	Allen LA	22750	16327	4490	246
Beauregard LACD 4	CD 4	Beauregard LA	36549	29529	4649	402
Bienville LACD 4	CD 4	Bienville LA	12981	6950	5600	57
Bossier LACD 4	CD 4	Bossier LA	128746	81052	32551	3492
Caddo LACD 4	CD 4	Caddo LA	237848	103457	119304	4034
Caldwell LACD 4	CD 4	Caldwell LA	9645	7646	1632	51
Claiborne LACD 4	CD 4	Claiborne LA	14170	7263	6360	88
DeSoto LACD 4	CD 4	DeSoto LA	26812	15284	9973	117
Evangeline LACD 4	CD 4	Evangeline LA	32350	21354	9235	241
Grant LACD 4	CD 4	Grant LA	22169	17709	3335	133
Natchitoches LACD 4	CD 4	Natchitoches LA	37515	19361	15725	255
Rapides LACD 4	CD 4	Rapides LA	514	367	32	3
Red River LACD 4	CD 4	Red River LA	7620	4195	3106	25

Sabine LACD 4	CD 4	Sabine LA	22155	15036	3861	94
St. Landry LACD 4	CD 4	St. Landry LA	50492	32833	15405	357
Union LACD 4	CD 4	Union LA	14575	10858	2826	41
Vernon LACD 4	CD 4	Vernon LA	48750	35087	7611	1442
Webster LACD 4	CD 4	Webster LA	36967	22735	12679	208
Winn LACD 4	CD 4	Winn LA	13755	8594	3727	210
Avoyelles LACD 5	CD 5	Avoyelles LA	39693	25625	11678	434
Catahoula LACD 5	CD 5	Catahoula LA	8906	5776	2395	46
Concordia LACD 5	CD 5	Concordia LA	18687	10275	7725	122
East Baton Rouge LACD 5	CD 5	East Baton Rouge LA	170044	21531	138505	2679
East Carroll LACD 5	CD 5	East Carroll LA	7459	2054	5272	29
East Feliciana LACD 5	CD 5	East Feliciana LA	10155	5229	4582	45
Franklin LACD 5	CD 5	Franklin LA	19774	12492	6802	70
Jackson LACD 5	CD 5	Jackson LA	15031	9967	4166	175
LaSalle LACD 5	CD 5	LaSalle LA	14791	11348	1422	283
Lincoln LACD 5	CD 5	Lincoln LA	48396	26034	19364	892
Madison LACD 5	CD 5	Madison LA	10017	3475	6363	20
Morehouse LACD 5	CD 5	Morehouse LA	25629	12281	12484	160
Ouachita LACD 5	CD 5	Ouachita LA	160368	88545	61217	2788
Pointe Coupee LACD 5	CD 5	Pointe Coupee LA	13871	6953	6310	87
Rapides LACD 5	CD 5	Rapides LA	129509	77143	42560	2425
Richland LACD 5	CD 5	Richland LA	20043	11785	7603	83
St. Landry LACD 5	CD 5	St. Landry LA	29169	8469	19952	133
Tensas LACD 5	CD 5	Tensas LA	4147	1744	2312	23
Union LACD 5	CD 5	Union LA	6532	3602	2398	21
West Baton Rouge LACD 5	CD 5	West Baton Rouge LA	5851	2060	3520	41
West Carroll LACD 5	CD 5	West Carroll LA	9751	7894	1425	27
West Feliciana LACD 5	CD 5	West Feliciana LA	8573	6088	2153	17
Ascension LACD 6	CD 6	Ascension LA	37733	26511	6549	1182
Assumption LACD 6	CD 6	Assumption LA	12924	9580	2758	48
East Baton Rouge LACD 6	CD 6	East Baton Rouge LA	284943	173521	74415	13618
East Feliciana LACD 6	CD 6	East Feliciana LA	9384	6287	2759	46
Iberville LACD 6	CD 6	Iberville LA	20259	11433	7754	236
Lafourche LACD 6	CD 6	Lafourche LA	37350	24187	10664	407
Livingston LACD 6	CD 6	Livingston LA	142282	116855	12658	1697
Pointe Coupee LACD 6	CD 6	Pointe Coupee LA	6887	5442	1194	20
St. Helena LACD 6	CD 6	St. Helena LA	10920	4527	6031	39
St. Landry LACD 6	CD 6	St. Landry LA	2879	2309	479	9
St. Martin LACD 6	CD 6	St. Martin LA	1368	1285	13	7
Tangipahoa LACD 6	CD 6	Tangipahoa LA	133157	81336	41879	1474
Terrebonne LACD 6	CD 6	Terrebonne LA	2114	1155	747	30
Washington LACD 6	CD 6	Washington LA	45463	29943	13434	216
West Baton Rouge LACD 6	CD 6	West Baton Rouge LA	21348	12247	7650	246
West Feliciana LACD 6	CD 6	West Feliciana LA	6737	4795	1587	72

Sources: 2020 Census Data and December 2022 Registered Voter Data as provided by the Louisiana Secretary of State as

TOT_AMIND	TOT_OTHER	TOT_HISPAN	VAP_TOTAL	VAP_WHITE	VAP_BLACK	VAP_ASIAN	VAP_AMIND
76	217	226	1464	1212	39	21	58
4337	37746	47159	192435	129938	22801	8920	3278
3438	3190	3892	41115	33139	3193	435	2262
569	3438	5984	39613	31740	3348	1475	448
697	1786	2236	17334	10856	3857	925	500
674	3097	4182	23136	14655	5226	620	498
152	1104	1226	3467	1875	507	274	101
5660	17852	20844	202228	154621	26761	4075	4161
0	0	0	0	0	0	0	0
8568	6006	7218	80913	54689	15297	1216	5698
1408	5944	7079	65001	41729	17632	745	992
41	129	177	4867	2109	2601	15	30
76	735	842	9478	3866	4826	68	60
3349	25173	31898	152219	54197	69374	8772	2557
75	172	156	4620	4357	93	7	52
3097	18606	25033	266583	78512	162720	9045	2500
273	1533	1828	8639	4337	2718	362	190
925	3309	4141	39541	26154	9890	529	667
82	315	343	15505	7883	7297	31	64
465	2536	3291	32503	11622	18437	323	350
573	1421	1641	42943	34071	7383	173	400
3536	9389	11384	163166	108789	41898	3359	2604
75	155	197	4358	4100	79	23	47
794	3250	3897	52791	31295	17069	1562	581
472	692	734	24039	19121	4006	111	325
3210	13590	15983	183875	121608	45917	4664	2387
7	34	57	1074	896	134	5	7
498	1388	1578	37176	24291	11148	397	376
1518	2857	3298	34054	19719	11013	319	1072
623	2002	2296	43012	34363	5787	1037	488
947	740	1893	17510	12751	3275	182	646
1052	917	1271	27489	22304	3495	269	773
207	167	211	10073	5486	4284	30	162
3273	8378	10237	95876	62931	22440	2448	2477
3840	7213	8381	182407	85059	86359	3008	2958
150	166	221	7478	5969	1224	46	116
185	274	479	11507	6258	4824	55	140
740	698	762	20440	11909	7425	86	557
280	1240	1336	24408	16460	6483	187	217
644	348	1333	17527	13964	2717	97	507
861	1313	1490	29349	16010	11415	198	683
98	14	14	412	296	24	3	87
171	123	188	5714	3338	2164	3	116

2723	441	710	17064	12054	2655	66	1970
456	1441	1610	37827	25605	10702	248	327
250	600	690	11472	8783	2089	23	179
1600	3010	4175	36261	26765	5133	1074	1160
687	658	688	28753	18144	9464	154	558
263	961	1023	10906	6932	2695	170	207
767	1189	1485	30578	20269	8311	379	570
119	570	614	6951	4557	1736	33	87
233	332	459	14217	8108	5613	100	167
944	6385	7632	127792	18651	101901	2061	760
43	61	115	5901	1773	4043	19	27
124	175	227	8638	4637	3727	32	97
205	205	276	15028	9901	4779	44	153
255	468	468	11783	7967	3125	140	174
372	1366	1402	11563	8636	1065	264	271
662	1444	1754	38655	21306	15119	744	526
59	100	204	7435	2906	4391	9	48
370	334	381	20062	10095	9300	117	279
2661	5157	5658	120200	69974	42290	2118	2059
93	428	426	10817	5747	4617	75	64
3004	4377	5076	98380	61077	30181	1783	2247
258	314	400	15383	9338	5546	66	203
136	479	518	21786	6799	14467	98	96
26	42	67	3235	1446	1728	12	23
88	423	445	5160	3024	1772	16	75
42	188	204	4636	1725	2709	24	38
180	225	325	7532	6223	1010	20	136
115	200	478	7741	5599	1853	1	95
596	2895	3304	26956	19407	4507	769	398
141	397	511	10285	7824	2067	21	109
3752	19637	22758	226397	144397	54538	10435	2958
138	154	164	7545	5103	2191	29	101
229	607	737	16031	9429	5757	184	190
711	1381	1624	28884	19342	7791	296	463
3111	7961	8791	105141	88432	8136	1099	2311
66	165	199	5433	4361	885	16	55
134	189	216	8463	3805	4371	28	109
44	38	50	2198	1805	328	7	28
34	29	44	1154	1091	11	5	30
2454	6014	7242	101491	65205	29217	1100	1827
69	113	140	1592	942	499	23	52
736	1134	1410	34951	23743	9732	154	561
284	921	1040	15890	9421	5440	185	181
110	173	173	5042	3684	1098	55	79

**Balanced Congressional Plan-District Assignments by
2020 Census Population and December 2022 Voter I**

VAP_OTHER	VAP_HISPAN	REG_TOTAL_	REG_WHITE_	REG_BLACK_	REG_OTHER_	REG_DEM_TO
134	142	1040	966	11	63	246
27498	33801	147818	116219	12726	18873	41653
2086	2478	32561	28355	2340	1866	10289
2602	5070	32528	27606	1527	3395	12716
1196	1377	13929	9548	3124	1257	5108
2137	2834	19283	14049	3966	1268	7785
710	777	2296	1600	363	333	656
12610	14310	177642	144956	20896	11790	40569
0	0	0	0	0	0	0
4013	4606	61465	45201	11517	4747	18270
3903	4559	56211	38529	14975	2707	21020
112	137	4478	1822	2601	54	2990
658	748	6817	2234	4415	168	4450
17319	21683	116201	44181	57036	14984	60390
111	109	3915	3804	38	73	1561
13806	18086	223138	63704	140272	19162	152619
1032	1194	6356	4196	1516	644	2604
2301	2737	35204	24467	8851	1886	12697
230	237	15040	7283	7548	209	9502
1771	2210	29033	10313	17269	1451	17606
916	1026	38028	30788	6513	727	13749
6516	7570	120799	85847	29618	5334	43829
109	130	4875	4684	96	95	1454
2284	2657	45697	28865	14909	1923	17857
476	489	20029	16353	3219	457	6940
9299	10829	153350	108551	36483	8316	48653
32	41	943	843	84	16	329
964	1072	33626	22367	10470	789	14238
1931	2177	28086	17216	9601	1269	11361
1337	1496	36848	30581	5002	1265	12912
656	1755	12431	9674	2253	504	4911
648	828	22316	18798	2373	1145	5437
111	141	8874	4853	3938	83	4348
5580	6619	69791	50932	14828	4031	18529
5023	5618	152354	73558	71839	6957	72001
123	163	6092	5168	834	90	1847
230	403	8656	4667	3843	146	3758
463	495	19088	11455	7041	592	7934
1061	1111	20660	14646	5671	343	9453
242	1179	12712	11190	1184	338	3236
1043	1140	23233	12935	9271	1027	10375
2	4	344	264	0	80	156
93	113	5660	3141	2436	83	2811

319	502	14601	11054	2198	1349	4777
945	1005	34520	23534	10007	979	14899
398	430	10627	8382	1952	293	3260
2129	2740	24144	19261	3017	1866	6412
433	434	22916	15033	7422	461	8895
902	941	8467	6033	2309	125	3163
1049	1257	23577	16626	6351	600	11049
538	558	6515	4667	1788	60	2734
229	310	12033	7264	4568	201	5474
4419	5238	105962	14605	87140	4217	74640
39	80	4754	1319	3390	45	3134
145	203	6550	3114	3177	259	3499
151	183	13253	9066	4077	110	5112
377	372	9504	6678	2634	192	3522
1327	1325	8835	8016	642	177	2154
960	1187	25773	15692	9106	975	9564
81	149	7284	2494	4682	108	4170
271	292	17035	8555	8198	282	8027
3759	3946	100528	60831	36090	3607	37548
314	282	10138	5424	4557	157	5605
3092	3438	81341	53267	24494	3580	30091
230	293	13675	8488	4956	231	5261
326	339	21102	6149	14480	473	13528
26	46	3465	1505	1925	35	2101
273	279	4585	2659	1756	170	1889
140	145	3784	1354	2369	61	2320
143	192	7057	5931	1042	84	2017
193	453	2614	1420	1159	35	1301
1875	2102	23480	18123	3766	1591	5824
264	352	9118	7006	1995	118	4507
14069	16180	172594	123091	37519	11984	57108
121	114	7081	4845	2028	208	2621
471	560	14816	8620	5809	387	8187
992	1156	22310	16714	4857	739	7496
5163	5390	84514	76081	5360	3073	17652
116	147	5009	4146	777	86	2254
150	149	8349	3648	4576	125	5127
30	30	2345	1850	448	47	1064
17	31	997	983	1	13	273
4142	4840	78223	53986	21373	2864	28096
76	95	943	642	248	53	286
761	901	27657	18889	8122	646	11549
663	726	13369	8610	4481	278	5892
126	119	4942	3744	1093	105	1675

4A

Parish Data						
REG_DEM_WH	REG_DEM_BL	REG_DEM_OT	REG_REP_TO	REG_REP_WH	REG_REP_BL	REG_REP_OT
226	4	16	422	400	2	20
27253	9003	5397	61928	57060	303	4565
8318	1615	356	12976	12274	84	618
10203	1133	1380	9728	9171	28	529
2188	2509	411	5069	4659	84	326
4383	3023	379	5090	4754	81	255
323	270	63	848	759	8	81
22754	15161	2654	84053	79661	552	3840
0	0	0	0	0	0	0
8883	8325	1062	24941	23247	327	1367
8658	11656	706	20096	19059	330	707
727	2245	17	769	715	46	8
639	3749	62	1111	1024	51	36
12378	43429	4583	21353	17405	1117	2831
1520	28	13	1337	1313	1	23
31552	112409	8658	15423	11236	2034	2153
1332	1087	185	1507	1352	40	115
5238	7009	450	13194	12437	192	565
2841	6578	83	3089	2939	112	38
3259	13849	498	4753	4165	308	280
8806	4796	147	15249	14781	211	257
20088	22255	1486	43042	41028	806	1208
1369	66	19	2121	2087	6	28
6511	10882	464	15908	14912	514	482
4406	2432	102	7584	7362	87	135
21070	25542	2041	61481	57823	1359	2299
275	53	1	374	362	8	4
6110	7978	150	11361	10806	324	231
3722	7325	314	9111	8523	267	321
9132	3550	230	14173	13550	208	415
2950	1797	164	4664	4472	57	135
3558	1667	212	10288	9778	97	413
1016	3316	16	2858	2751	76	31
6780	10837	912	32329	30686	402	1241
13981	55815	2205	42898	39972	1395	1531
1183	644	20	2816	2760	27	29
816	2890	52	2944	2773	127	44
1974	5758	202	6830	6535	125	170
4855	4502	96	7037	6802	134	101
2271	908	57	5995	5792	74	129
3095	6871	409	7012	6523	286	203
101	0	55	76	72	0	4
777	2001	33	1776	1696	54	26

2705	1672	400	6371	5824	74	473
6785	7838	275	11469	10909	289	274
1683	1509	68	5032	4865	80	87
4041	1997	374	10456	9672	124	660
2861	5923	111	8592	8272	177	143
1406	1738	19	3085	3005	45	35
5867	4960	222	7027	6726	172	129
1298	1421	15	2429	2360	53	16
1617	3801	56	3966	3826	86	54
4501	68444	1695	7989	5837	1646	506
351	2763	20	772	683	81	8
725	2607	167	1704	1595	76	33
1982	3112	18	5426	5267	112	47
1291	2188	43	3982	3862	59	61
1625	493	36	4754	4671	20	63
2386	6853	325	9606	9186	231	189
492	3648	30	1511	1386	97	28
1566	6384	77	5256	4924	256	76
9245	27315	988	37772	36083	809	880
1792	3767	46	2457	2350	74	33
11040	18125	926	30039	28335	740	964
1514	3693	54	5265	5024	162	79
2017	11316	195	3241	2715	446	80
393	1696	12	838	803	27	8
496	1346	47	1625	1510	68	47
373	1927	20	628	591	26	11
1252	750	15	3368	3264	66	38
268	1027	6	760	739	14	7
2645	2847	332	10927	10319	87	521
2845	1629	34	2728	2648	59	21
25270	28586	3252	68772	65145	807	2820
851	1670	100	2807	2713	47	47
3037	5004	146	3577	3434	75	68
3846	3496	154	8965	8603	139	223
13254	3888	510	42440	41192	169	1079
1583	651	20	1594	1557	12	25
1092	4007	28	1799	1694	76	29
688	366	11	730	704	10	13
272	0	1	470	461	0	9
11556	15859	681	28245	26816	617	812
129	150	7	328	308	5	15
4986	6379	184	9539	9168	220	151
2187	3623	82	4217	4093	70	54
714	940	21	2122	2062	20	40

REG_OTH_TO	REG_OTH_WH	REG_OTH_BL	REG_OTH_OT	TOT_ASIAN_	VAP_ASIAN_	REG_TOTAL1
372	340	5	27	26	22	1031
44237	31906	3420	8911	12024	9048	147437
9296	7763	641	892	619	435	32099
10084	8232	366	1486	1981	1506	32683
3752	2701	531	520	1367	943	13908
6408	4912	862	634	926	647	19269
792	518	85	189	348	275	2289
53020	42541	5183	5296	6065	4222	178779
0	0	0	0	0	0	0
18253	13071	2865	2318	1617	1134	60765
15095	10812	2989	1294	1188	782	56301
718	379	310	29	24	16	4395
1256	571	615	70	103	76	6783
34458	14398	12490	7570	11496	8913	115664
1017	971	9	37	12	7	3909
55096	20916	25829	8351	11516	9421	223561
2245	1512	389	344	509	369	6384
9313	6792	1650	871	884	541	34985
2449	1503	858	88	74	41	14966
6674	2889	3112	673	439	337	28913
9030	7201	1506	323	247	173	37678
33928	24731	6557	2640	4830	3442	120511
1300	1228	24	48	35	25	4789
11932	7442	3513	977	1886	1377	44526
5505	4585	700	220	216	129	20013
43216	29658	9582	3976	6629	4761	153493
240	206	23	11	0	0	933
8027	5451	2168	408	111	67	33194
7614	4971	2009	634	532	331	27921
9763	7899	1244	620	1471	1040	36769
2856	2252	399	205	265	192	12201
6591	5462	609	520	438	287	22294
1668	1086	546	36	49	23	8847
18933	13466	3589	1878	3766	2611	69743
37455	19605	14629	3221	4325	3162	151296
1429	1225	163	41	56	50	6031
1954	1078	826	50	112	65	8598
4324	2946	1158	220	129	89	18713
4170	2989	1035	146	259	198	20553
3481	3127	202	152	144	100	12688
5846	3317	2114	415	309	231	23107
112	91	0	21	3	3	339
1073	668	381	24	28	3	5631

5B

3453	2525	452	476	114	81	14547
8155	5841	1879	431	383	259	32781
2335	1834	363	138	50	32	10650
7276	5548	896	832	1573	1126	24060
5429	3900	1322	207	219	158	22737
2219	1622	526	71	225	181	8406
5501	4033	1219	249	451	389	23426
1352	1009	314	29	51	38	6467
2593	1821	681	91	125	100	11964
23333	4267	17050	2016	2850	2147	105509
848	285	546	17	40	29	4709
1347	794	494	59	62	49	6515
2715	1817	853	45	96	65	13159
2000	1525	387	88	187	151	9449
1927	1720	129	78	303	273	8792
6603	4120	2022	461	931	781	25649
1603	616	937	50	27	14	7278
3752	2065	1558	129	188	138	16922
25208	15503	7966	1739	2908	2189	99752
2076	1282	716	78	92	79	9801
21211	13892	5629	1690	2565	1859	79837
3149	1950	1101	98	110	79	13662
4333	1417	2718	198	148	107	19489
526	309	202	15	27	16	3455
1071	653	342	76	24	19	4571
836	390	416	30	36	18	3775
1672	1415	226	31	36	27	7038
553	413	118	22	26	3	2542
6729	5159	832	738	1212	785	23616
1884	1514	307	63	50	22	9013
46714	32676	8126	5912	13945	10628	172698
1653	1281	311	61	56	39	7085
3052	2149	730	173	260	202	14736
5849	4265	1222	362	407	298	22270
24422	21635	1303	1484	1755	1117	84568
1161	1006	114	41	24	20	4874
1423	862	493	68	42	30	8321
548	457	73	22	8	6	2212
254	250	1	3	7	5	993
21882	15614	4897	1371	1531	1125	76256
330	205	93	31	29	21	955
6569	4735	1523	311	250	182	27587
3260	2330	788	142	260	195	13366
1145	968	133	44	83	57	4865

6A

REG_WHITE1	REG_BLACK1	REG_OTHER1	REG_DEM_1
961	12	58	241
115777	12748	18912	41351
27951	2317	1831	9985
27730	1551	3402	12756
9513	3134	1261	5086
14020	3974	1275	7735
1595	362	332	646
145724	21142	11913	40588
0	0	0	0
44745	11315	4705	17890
38579	15006	2716	20935
1799	2542	53	2914
2231	4385	167	4411
43839	56828	14997	59974
3798	37	74	1547
64256	139974	19331	152534
4213	1523	648	2600
24309	8797	1879	12561
7254	7501	211	9435
10219	17234	1460	17505
30555	6407	716	13474
85659	29513	5339	43258
4610	88	91	1402
28287	14352	1887	17218
16350	3202	461	6839
108645	36481	8367	48471
835	82	16	324
22120	10298	776	13943
17117	9529	1275	11229
30505	4994	1270	12725
9478	2217	506	4781
18771	2369	1154	5346
4843	3917	87	4296
50861	14838	4044	18394
73113	71249	6934	71214
5124	818	89	1805
4632	3820	146	3725
11330	6810	573	7678
14566	5643	344	9339
11174	1176	338	3190
12850	9224	1033	10281
260	0	79	156
3130	2418	83	2788

6B

11023	2184	1340	4712
22555	9320	905	13981
8414	1944	292	3214
19182	3011	1867	6303
14938	7339	460	8751
5988	2292	126	3109
16534	6294	598	10883
4639	1770	58	2693
7222	4540	202	5401
14518	86779	4212	74214
1306	3359	44	3096
3109	3154	252	3453
9015	4034	110	5034
6647	2610	192	3473
7978	637	177	2113
15672	9016	961	9470
2494	4674	110	4150
8505	8131	286	7924
60515	35658	3579	37056
5280	4372	149	5384
52572	23775	3490	29268
8470	4961	231	5218
5834	13220	435	12454
1503	1917	35	2091
2652	1748	171	1859
1355	2359	61	2311
5913	1040	85	1986
1390	1118	34	1249
18221	3808	1587	5824
6940	1956	118	4416
123033	37641	12024	56935
4850	2032	203	2607
8582	5767	387	8089
16718	4810	742	7397
76062	5425	3081	17498
4040	749	85	2162
3628	4565	128	5095
1704	465	44	1016
979	1	13	270
52912	20525	2819	27040
650	251	54	285
18835	8102	650	11445
8582	4506	278	5880
3702	1062	101	1625

District	TOT_POP	Deviation	% Deviation	TOT_WHITE	% TOT_WHITE	TOT_BLACK	% TOT_BLACK
1	776618	325	0.0%	538244	69.3%	115358	14.9%
2	776357	64	0.0%	283873	36.6%	399061	51.4%
3	776275	-18	0.0%	508115	65.5%	205820	26.5%
4	776363	70	0.0%	455637	58.7%	262101	33.8%
5	776396	103	0.0%	360370	46.4%	370208	47.7%
6	775748	-545	-0.1%	511413	65.9%	190571	24.6%

Sources: 2020 Census Data and December 2022 Registered Voter Data as provided by the Louisiana Secretary of State

TOT_ASIAN	% TOT_ASIAN	TOT_AMIND	% TOT_AMIND	TOT_OTHER	% TOT_OTHER	TOT_HISPAN
24409	3.1%	24171	3.1%	74436	9.6%	92967
25180	3.2%	9791	1.3%	58452	7.5%	74788
16256	2.1%	11306	1.5%	34778	4.5%	41065
11496	1.5%	18427	2.4%	28702	3.7%	36712
10600	1.4%	10756	1.4%	24462	3.2%	28614
19347	2.5%	12609	1.6%	41808	5.4%	48403

State as published on the Legislative Redistricting Website

**Louisiana Congressional Districts
Balanced Plan Demographics**

% TOT_HISPAN	VAP_TOTAL	VAP_WHITE	% VAP_WHITE	VAP_BLACK	% VAP_BLACK	VAP_ASIAN
12.0%	601705	432725	71.9%	81029	13.5%	17961
9.6%	598956	234766	39.2%	295588	49.4%	19897
5.3%	586488	398253	67.9%	144434	24.6%	11650
4.7%	592473	361018	60.9%	188867	31.9%	8347
3.7%	593473	289758	48.8%	269283	45.4%	8155
6.2%	597453	407991	68.3%	136568	22.9%	14406

% VAP_ASIAN	VAP_AMIND	% VAP_AMIND	VAP_OTHER	% VAP_OTHER	VAP_HISPAN	% VAP_HISPAN
3.0%	17004	2.8%	52986	8.8%	65395	10.9%
3.3%	7462	1.2%	41243	6.9%	51700	8.6%
2.0%	8287	1.4%	23864	4.1%	27487	4.7%
1.4%	13840	2.3%	20401	3.4%	25621	4.3%
1.4%	8195	1.4%	18082	3.0%	20567	3.5%
2.4%	9452	1.6%	29036	4.9%	32892	5.5%

REG_TOTAL_	REG_WHITE_	% REG_WHITE_	REG_BLACK_	% REG_BLACK_	REG_OTHER_	% REG_OTHER_
488562	388500	79.5%	56470	11.6%	43592	8.9%
496393	200533	40.4%	254521	51.3%	41338	8.3%
482281	346095	71.8%	115995	24.1%	20191	4.2%
477486	304578	63.8%	152416	31.9%	20492	4.3%
489364	245124	50.1%	228581	46.7%	15659	3.2%
475747	350978	73.8%	102453	21.5%	22317	4.7%