

2023 Regular Session

HOUSE BILL NO. 509

BY REPRESENTATIVE ZERINGUE

Prefiled pursuant to Article III, Section 2(A)(4)(b)(i) of the Constitution of Louisiana.

REAPPORTIONMENT/JUDGES: Provides for the redistricting of districts for the election of justices to the supreme court

1 AN ACT

2 To enact R.S. 13:101.2 and 101.3 and to repeal R.S. 13:101, 101.1, and 312.4, relative to the  
3 supreme court; to provide relative to redistricting supreme court justice districts; to  
4 provide for the filling of vacancies; to eliminate statutory provisions for a temporary  
5 additional judgeship for the Court of Appeal for the Fourth Circuit and such judge's  
6 appointment to the supreme court; to provide for an effective date; and to provide for  
7 related matters.

8 Be it enacted by the Legislature of Louisiana:

9 Section 1. R.S. 13:101.2 and 101.3 are hereby enacted to read as follows:

10 §101.2. Supreme court districts; justices

11 The state shall be divided into seven supreme court districts. The supreme  
12 court shall be composed of one justice elected from each of the seven districts as set  
13 forth below:

14 (1) District 1 is composed of Precincts 3, 4, 5, 10, 11, 12, 13, 14, 15, 16, 17,  
15 18, 19, 20, 21, 22, 23, 24, 25, 26, 27, 28, 29, 30, 31, 32, 33, 34, 35, 36, 37, 38, 39, 40,  
16 41, 42, 43, 44, 45, 46, 59, 60, 66, 68, 69, 70, 71, 72, 73, 74, 75, 76, 77, 78, 79, 80, 81,  
17 82, 83, 84, 85, 86, 87, 88, 89, 90, 91, 92, 93, 94, 95, 96, 97, 98, 99, 100, 101, 102,  
18 103, 105, and 106 of Jefferson Parish; Livingston Parish; St. Tammany Parish;  
19 Tangipahoa Parish; and Washington Parish.

1           (2) District 2 is composed of Allen Parish; Beauregard Parish; Bossier  
2           Parish; Caddo Parish; DeSoto Parish; Evangeline Parish; Natchitoches Parish; Red  
3           River Parish; Sabine Parish; Vernon Parish; and Webster Parish.

4           (3) District 3 is composed of Acadia Parish; Calcasieu Parish; Cameron  
5           Parish; Jefferson Davis Parish; Precincts 1, 2, 3, 4, 5, 6, 7, 8, 9, 10, 12, 13, 25, 26,  
6           27, 28, 29, 30, 31, 32, 33, 34, 35, 36, 37, 38, 39, 40, 41, 42, 43, 44, 45, 46, 47, 48, 49,  
7           64, 65, 66, 67, 69, 70, 71, 72, 73, 74, 75, 76, 77, 78, 79, 80, 81, 82, 83, 84, 85, 86, 87,  
8           88, 89, 90, 91, 92, 93, 94, 95, 96, 97, 98, 99, 100, 101, 102, 103, 104, 105, 106, 107,  
9           108, 109, 110, 111, 112, 113, 114, 115, 116, 117, 118, 119, 120, 121, 122, 123, 124,  
10           125, 126, 127, and 128 of Lafayette Parish; St. Landry Parish; and Vermilion Parish.

11           (4) District 4 is composed of Avoyelles Parish; Bienville Parish; Caldwell  
12           Parish; Catahoula Parish; Claiborne Parish; Concordia Parish; East Carroll Parish;  
13           Franklin Parish; Grant Parish; Jackson Parish; LaSalle Parish; Lincoln Parish;  
14           Madison Parish; Morehouse Parish; Ouachita Parish; Rapides Parish; Richland  
15           Parish; Tensas Parish; Union Parish; West Carroll Parish; West Feliciana Parish; and  
16           Winn Parish.

17           (5) District 5 is composed of Precincts 28, 30, 31, 32, 36, 37, 39, 40, 42, 44,  
18           45, 47, 48, 50, 51, 52, 54, 55, 57, 58, and 65 of Ascension Parish; Precincts 1-1, 1-2,  
19           1-3, 4-1, 4-2, 4-3, 5-1, 5-2, 6-1, 6-2, and 6-3 of Assumption Parish; Precincts 1-1,  
20           1-2, 1-3, 1-4, 1-5, 1-6, 1-7, 1-8, 1-9, 1-10, 1-11, 1-12, 1-13, 1-14, 1-15, 1-16, 1-17,  
21           1-18, 1-19, 1-20, 1-21, 1-22, 1-23, 1-24, 1-25, 1-26, 1-27, 1-28, 1-29, 1-30, 1-31,  
22           1-32, 1-33, 1-34, 1-35, 1-36, 1-37, 1-38, 1-39, 1-40, 1-41, 1-42, 1-43, 1-44, 1-45,  
23           1-46, 1-47, 1-48, 1-49, 1-50, 1-51, 1-52, 1-53, 1-54, 1-55, 1-56, 1-57, 1-58, 1-59,  
24           1-60, 1-61, 1-62, 1-63, 1-64, 1-65, 1-66, 1-67, 1-68, 1-69, 1-70, 1-71, 1-72, 1-73,  
25           1-74, 1-75, 1-76, 1-77, 1-78, 1-79, 1-80, 1-81, 1-82, 1-83, 1-84, 1-85, 1-86, 1-87,  
26           1-88, 1-89, 1-90, 1-91, 1-92, 1-93, 1-94, 1-95, 1-97, 1-98, 1-99, 1-100, 1-101, 1-102,  
27           1-103, 1-104, 1-105, 1-107, 2-1, 2-2, 2-3, 2-4, 2-5, 2-6, 2-7, 2-8, 2-9, 2-10, 2-11,  
28           2-12, 2-13, 2-14, 2-15, 2-16, 2-17, 2-18, 2-19, 2-20, 2-21, 2-22, 2-23, 2-24, 2-25,  
29           2-26, 2-27, 2-28, 2-29, 2-30, 2-31, 2-32, 2-33, 2-34, 2-35, 2-36, 2-37, 3-1, 3-2, 3-3,

1        3-4, 3-5, 3-6, 3-7, 3-8, 3-9, 3-10, 3-11, 3-12, 3-13, 3-14, 3-15, 3-16, 3-17, 3-18, 3-20,  
 2        3-21, 3-23, 3-24, 3-25, 3-26, 3-27, 3-28, 3-29, 3-30, 3-31, 3-32, 3-33, 3-34, 3-35,  
 3        3-36, 3-37, 3-38, 3-39, 3-41, 3-43, 3-44, 3-45, 3-46, 3-49, 3-50, 3-51, 3-52, 3-53,  
 4        3-54, 3-55, 3-56, 3-57, 3-58, 3-59, 3-60, 3-61, 3-63, 3-64, 3-65, 3-66, 3-68, 3-69,  
 5        3-70, 3-71, and 3-72 of East Baton Rouge Parish; East Feliciana Parish; Precincts  
 6        1-1, 1-2, 1-3, 1-7, 1-8, 2-1, 2-2, 2-4, 2-5, 2-6, 3-3, 4-1, 4-2, 4-3, 5-3, 5-5, 5-6, 6-1,  
 7        6-4, 10-1, 10-2, 11-2, 11-4, 11-6, 11-7, 12-1, 12-2, 12-3, 14-2, and 14-5 of Iberia  
 8        Parish; Precincts 1, 3, 6, 7, 9, 10, 11, 12, 13C, 14A, 15, 16, 19, 20, 23, 31, and 32 of  
 9        Iberville Parish; Precincts 11, 14, 15, 16, 17, 18, 19, 20, 21, 22, 23, 24, 51, 52, 53,  
 10       54, 55, 56, 57, 58, 59, 60, 61, 62, 63, and 68 of Lafayette Parish; Pointe Coupee  
 11       Parish; St. Helena Parish; St. James Parish; Precincts 3, 4, 5, 9, 10, 11, 12, 13, 14, 15,  
 12       18, 19, 24, 25, 26, 27, 33, 34, 39, 40, 41, 42, and 43 of St. Martin Parish; and West  
 13       Baton Rouge Parish.

14                (6) District 6 is composed of Precincts 1, 2, 3, 4, 5, 6, 7, 8, 9, 10, 11, 12, 13,  
 15        14, 15, 16, 17, 18, 20, 21, 22, 23, 24, 25, 26, 27, 33, 34, 35, 41, 43, 53, 61, 62, 63, 64,  
 16        66, 71, 72, 73, 76, 77, and 78 of Ascension Parish; Precincts 2-1, 2-2, 2-3, 2-4, 2-5,  
 17        3-1, 3-2, 4-4, 5-3, 5-5, 7-1, 7-2, 7-3, 8-1, and 9-1 of Assumption Parish; Precincts  
 18        3-19, 3-22, 3-40, 3-47, 3-48, 3-62, and 3-67 of East Baton Rouge Parish; Precincts  
 19        1-4, 1-5, 1-6, 2-3, 3-1, 3-2, 3-4, 3-5, 3-6, 5-1, 5-2, 5-4, 5-7, 6-2, 6-3, 6-5, 7-1, 7-2,  
 20        7-3, 7-4, 7-5, 8-1, 8-2, 8-3, 8-4, 8-5, 9-1, 9-2, 9-4, 9-5, 10-3, 10-4, 11-1, 11-3, 11-5,  
 21        12-4, 13-1, 13-2, 13-3, 13-4, 13-5, 14-1, 14-3, and 14-4 of Iberia Parish; Precincts  
 22        4, 5, 13, 14, 15B, 17, 18, 21, 22, 24, 25, 26, 27, 28, and 29 of Iberville Parish;  
 23        Precincts 1, 2, 7, 8, 9, 51, 52, 53, 54, 55, 56, 57, 58, 61, 62, 63, 64, 65, 67, 108, 117,  
 24        118, 119, 120, 121, 122, 123, 124, 174, 175, 176, 177, 178, 182, 183, 184, 185A,  
 25        189, 190, 192, 193A, 193B, 194A, 194B, 198, 199, 202, 203, 204, 246, 247, 248,  
 26        1-GI, 1-H, 2-H, 3-H, 4-H, 5-H, 6-H, 7-H, 8-H, 9-H, 1-K, 2-K, 3-K, 4-K, 5-K, 6-KA,  
 27        6-KB, 7-KA, 7-KB, 8-K, 9-K, 10-K, 11-K, 12-K, 14-K, 15-K, 16-K, 17-K, 18-K,  
 28        19-K, 20-K, 28-K, 30-K, 34-K, 35-K, and 1-L of Jefferson Parish; Lafourche Parish;  
 29        Plaquemines Parish; St. Bernard Parish; Precincts 2-1, 2-3, 2-5, 3-1, 4-1, 4-2, 4-3,

1        5-5, 6-1, 6-2, 6-4, 7-1, 7-2, and 7-3 of St. Charles Parish; Precincts 1-1, 1-3, 2-1, 2-2,  
2        2-3, 2-4, 4-13, and 5-4 of St. John the Baptist Parish; Precincts 1, 2, 6, 7, 8, 16, 17,  
3        20, 21, 22, 23, 28, 29, 30, 31, 32, 35, 36, 37, and 38 of St. Martin Parish; St. Mary  
4        Parish; and Terrebonne Parish.

5                (7) District 7 is composed of Precincts 104, 115, 116, 125A, 125B, 126, 127,  
6        128, 129, 130, 131, 132, 133, 134, 136, 138, 150, 151, 152, 153, 154, 155, 156,  
7        157A, 157B, 170, 171, 172, 173, 179A, 179B, 180, 181, 185B, 187, 188, 191, 195,  
8        196, 197A, 197B, 200, 201, 205, 210, 211, 212, 213A, 213B, 213C, 214A, 214B,  
9        215, 216A, 216B, 216C, 217, 225, 226, 227, 228, 229, 230, 231, 232A, 232B, 234,  
10       235, 236, 237, 238A, 238B, 1-G, 2-G, 3-G, 4-G, 5-G, 6-G, 7-G, 8-G, 9-G, 10-G,  
11       11-G, 12-G, 13-G, 13-KA, 13-KB, 21-K, 22-K, 23-K, 24-K, 25-K, 26-K, 27-K,  
12       29-K, 31-K, 33-K, 1-W, 2-W, 3-W, 4-W, 5-W, 6-W, and 7-W of Jefferson Parish;  
13       Orleans Parish; Precincts 1-1, 1-2, 1-3, 1-5, 1-6, 2-2, 2-4, 2-6, 3-2, 3-3, 3-4, 4-4, 5-1,  
14       5-3, 5-4, 5-6, 6-6, 6-7, 6-8, and 7-4 of St. Charles Parish; and Precincts 1-2, 1-4, 1-5,  
15       3-1, 3-2, 3-4, 4-1, 4-2, 4-3, 4-14, 5-1, 5-7, 5-8, 6-1, 6-3, 6-4, 7-2, 7-3, 7-5, and 7-7  
16       of St. John the Baptist Parish.

17       §101.3. Assignment of districts; vacancies, elections; redistricting

18                A. Each justice of the supreme court in office on January 1, 2024, shall be  
19        the justice for the district having the same designation as the district from which the  
20        justice was elected and shall complete the term for which he was elected.

21                B. The successor to the office of justice of the supreme court shall be elected  
22        from the district assigned to that office as provided by Subsection A of this Section.  
23        The election shall be from the district composed as provided by R.S. 13:101.2.

24        Section 2. R.S. 13:101, 101.1, and 312.4 are hereby repealed.

25        Section 3.(A) The precincts referenced in this Act are those contained in the file  
26        named "2022 Precinct Shapefiles (12-25-2022)" available on the Louisiana House of  
27        Representatives website on the effective date of this Section. The 2022 Precinct Shapefiles  
28        are based upon those Voting Districts (VTDs) contained in the 2020 Census Redistricting  
29        TIGER/Line Shapefiles for the state of Louisiana as those files have been modified and

1 validated through the data verification program of the Louisiana House of Representatives  
2 and the Louisiana Senate to represent precinct changes submitted through December 25,  
3 2022, to the Legislature of Louisiana by parish governing authorities pursuant to the  
4 provisions of R.S. 18:532 and 532.1.

5 (B) When a precinct referenced in this Act has been subdivided by action of the  
6 parish governing authority on a nongeographic basis or subdivided by action of the parish  
7 governing authority on a geographic basis in accordance with the provisions of R.S.  
8 18:532.1, the enumeration in this Act of the general precinct designation shall include all  
9 nongeographic and all geographic subdivisions thereof, however such subdivisions may be  
10 designated.

11 (C) The territorial limits of the districts as provided in this Act shall continue in  
12 effect until changed by law regardless of any subsequent change made to the precincts by  
13 the parish governing authority.

14 Section 4.(A) Solely for the purposes of qualifying for election and the election of  
15 a member of the supreme court from District 2 at the regularly scheduled election for such  
16 office in 2023, the provisions of Section 1 of this Act shall become effective upon signature  
17 of this Act by the governor or, if not signed by the governor, upon expiration of the time for  
18 bills to become law without signature by the governor, as provided in Article III, Section 18  
19 of the Constitution of Louisiana. If this Act is vetoed by the governor and subsequently  
20 approved by the legislature, the provisions of Section 1 of this Act shall become effective  
21 on the day following such approval for the purposes established in this Subsection.

22 (B) For subsequent elections of members of the supreme court and for all other  
23 purposes, the provisions of Section 1 of this Act shall become effective on January 1, 2024.

24 (C) The provisions of Section 2 of this Act shall become effective on January 1,  
25 2024.

26 (D) The provisions of this Section and Section 3 of this Act shall become effective  
27 upon signature of this Act by the governor or, if not signed by the governor, upon expiration  
28 of the time for bills to become law without signature by the governor, as provided in  
29 Article III, Section 18 of the Constitution of Louisiana. If this Act is vetoed by the governor

1 and subsequently approved by the legislature, the provisions of this Section and Section 3  
2 of this Act shall become effective on the day following such approval.

---

DIGEST

The digest printed below was prepared by House Legislative Services. It constitutes no part of the legislative instrument. The keyword, one-liner, abstract, and digest do not constitute part of the law or proof or indicia of legislative intent. [R.S. 1:13(B) and 24:177(E)]

---

HB 509 Original

2023 Regular Session

Zeringue

**Abstract:** Provides for the redistricting of the state's supreme court and provides for the composition of seven supreme court districts. Effective for election purposes for the regular supreme court District 2 election in 2023 and for all purposes on Jan. 1, 2024.

Statistical summaries of proposed law including maps illustrating proposed district boundaries accompany this digest. (*Attached to the bill version on the internet.*)

Present constitution (Const. Art. V, §3) provides the supreme court must be composed of a chief justice and six associate justices.

Present constitution (Const. Art. V, §4) provides the state must be divided into at least six supreme court districts, and at least one judge shall be elected from each. Further provides the districts and the number of judges assigned to each on the effective date of this constitution are retained, subject to change by law enacted by two-thirds of the elected members of each house of the legislature.

Proposed law redraws district boundaries for the seven supreme court districts.

Proposed law provides the district boundaries will be effective upon signature of the governor or lapse of time for gubernatorial action for the purposes of qualifying for election and the election of a member of the supreme court from District 2 at the regularly scheduled election for such office in 2023.

Proposed law provides for subsequent elections of members of the supreme court and for all other purposes an effective date of Jan. 1, 2024, at which time present law is repealed and proposed districts are effective for all other purposes.

Proposed law repeals present law that provides for an additional judgeship for the Court of Appeal for the Fourth Circuit who is assigned to the La. Supreme Court.

Proposed law specifies that precincts referenced in district descriptions are those precincts identified in the file named "2022 Precinct Shapefiles (12-25-2022)" available on the La. House of Representatives website. Specifies that the 2022 Precincts are based upon those Voting Districts (VTDs) contained in the 2022 Census Redistricting TIGER/Line Shapefiles for the state of La. as validated through the data verification program of the La. legislature. Also specifies that if any such precinct has been subdivided by action of the parish governing authority on a nongeographic basis or subdivided by action of the parish governing authority on a geographic basis in accordance with present law, the enumeration of the general precinct designation shall include all nongeographic and all geographic subdivisions thereof. Further provides that the territorial limits of the districts as enacted shall continue in effect until changed by law regardless of any subsequent change made to the precincts by the parish governing authority.

Population data in the summaries accompanying this digest are derived from 2020 Census Redistricting Data (Public Law 94-171), Summary File for Louisiana. Population data,

statistical information, and maps are supplied for purposes of information and analysis and comprise no part of proposed law.

Effective upon signature of governor or lapse of time for gubernatorial action for election purposes only for the supreme court District 2 election in 2023; effective for other purposes Jan. 1, 2024.

(Adds R.S. 13:101.2 and 101.3; Repeals R.S. 13:101, 101.1, and 312.4)

# Plan Statistics

Plan: HLS 23RS-248 (Zeringue)

<u>Districts:</u>	<u># of Members</u>	<u>Actual Population</u>	<u>Ideal Population</u>	<u>Absolute Deviation</u>	<u>Relative Deviation</u>
District 1	1	698,432	665,393	33,039	4.965%
District 2	1	638,062	665,393	-27,331	-4.107%
District 3	1	659,777	665,393	-5,616	-0.844%
District 4	1	641,852	665,393	-23,541	-3.538%
District 5	1	688,286	665,393	22,893	3.441%
District 6	1	701,144	665,393	35,751	5.373%
District 7	1	630,204	665,393	-35,189	-5.288%
<b>Grand Total:</b>	<b>7</b>	<b>4,657,757</b>	<b>4,657,751</b>		

Ideal Population Per Member:	665393			
Number of Districts for Plan Type:	7			
Range of District Populations:	630,204	to	701,144	
Absolute Mean Deviation:	10,134			
Absolute Range:	-35,189	to	35,751	
Absolute Overall Range:	70,940			
Relative Mean Deviation:	3.94%			
Relative Range:	-5.29%	to	5.37%	
Relative Overall Range:	10.66%			

<b><i>Ideal - Actual:</i></b>	<b>-6</b>
<b><i>Remainder:</i></b>	<b>6</b>
<b><i>Unassigned Population:</i></b>	<b>0</b>



# Total Population

Plan: HLS 23RS-248 (Zerinque)

	Total Population	Total White	Total Black	Total Asian	Total American Indian	Total Other	Total Hispanic	VAP Total	VAP White	VAP Black	VAP Asian	VAP American Indian	VAP Other	VAP Hispanic Total
District 1	698,432	500,018	120,209	14,671	13,766	49,768	59,398	534,413	395,133	83,698	10,618	10,207	34,757	40,411
	100.000%	71.592%	17.211%	2.101%	1.971%	7.126%	8.504%	100.000%	73.938%	15.662%	1.987%	1.910%	6.504%	7.562%
District 2	638,062	363,417	223,184	10,556	16,174	24,731	31,131	485,271	287,725	160,308	7,675	12,115	17,448	21,355
	100.000%	56.956%	34.978%	1.654%	2.535%	3.876%	4.879%	100.000%	59.292%	33.035%	1.582%	2.497%	3.596%	4.401%
District 3	659,777	449,230	160,073	13,345	8,893	28,236	33,199	497,139	350,270	111,429	9,564	6,554	19,322	22,132
	100.000%	68.088%	24.262%	2.023%	1.348%	4.280%	5.032%	100.000%	70.457%	22.414%	1.924%	1.318%	3.887%	4.452%
District 4	641,852	380,310	222,438	8,270	11,324	19,510	23,751	494,221	303,571	160,817	6,344	8,617	14,872	17,740
	100.000%	59.252%	34.656%	1.288%	1.764%	3.040%	3.700%	100.000%	61.424%	32.539%	1.284%	1.744%	3.009%	3.589%
District 5	688,286	288,586	341,423	18,004	6,705	33,568	39,552	532,965	239,637	250,513	13,760	5,156	23,899	27,797
	100.000%	41.928%	49.605%	2.616%	0.974%	4.877%	5.746%	100.000%	44.963%	47.004%	2.582%	0.967%	4.484%	5.216%
District 6	701,144	468,406	133,952	18,676	22,966	57,144	69,424	532,638	370,525	92,997	13,393	15,949	39,774	47,120
	100.000%	66.806%	19.105%	2.664%	3.276%	8.150%	9.902%	100.000%	69.564%	17.460%	2.514%	2.994%	7.467%	8.847%
District 7	630,204	207,685	341,840	23,766	7,232	49,681	66,094	493,901	177,650	256,007	19,062	5,642	35,540	47,107
	100.000%	32.955%	54.243%	3.771%	1.148%	7.883%	10.488%	100.000%	35.969%	51.834%	3.859%	1.142%	7.196%	9.538%
Grand Total	4,657,757	2,657,652	1,543,119	107,288	87,060	262,638	322,549	3,570,548	2,124,511	1,115,769	80,416	64,240	185,612	223,662
	100.000%	57.059%	33.130%	2.303%	1.869%	5.639%	6.925%	100.000%	59.501%	31.249%	2.252%	1.799%	5.198%	6.264%

# Voter Registration

Plan: HLS 23RS-248 (Zerinque)

	Reg Total Dec 2022	Reg White Dec 2022	Reg Black Dec 2022	Reg Other Dec 2022	Reg Dem Total Dec 2022	Reg Rep Total Dec 2022	Reg Other Total Dec 2022
District 1	431,267	345,646	59,420	26,201	110,853	194,080	126,334
	80.699%	80.147%	13.778%	6.075%	25.704%	45.002%	29.294%
District 2	377,158	234,825	124,029	18,304	143,178	137,499	96,481
	77.721%	62.262%	32.885%	4.853%	37.962%	36.457%	25.581%
District 3	400,202	298,100	85,342	16,760	132,873	158,164	109,165
	80.501%	74.487%	21.325%	4.188%	33.201%	39.521%	27.277%
District 4	392,393	253,130	127,673	11,590	148,117	148,936	95,340
	79.396%	64.509%	32.537%	2.954%	37.747%	37.956%	24.297%
District 5	425,224	198,016	206,915	20,293	214,635	106,092	104,497
	79.785%	46.567%	48.660%	4.772%	50.476%	24.950%	24.575%
District 6	426,555	324,274	69,957	32,324	132,187	171,481	122,887
	80.083%	76.022%	16.400%	7.578%	30.989%	40.201%	28.809%
District 7	394,716	143,874	212,070	38,772	237,473	50,639	106,604
	79.918%	36.450%	53.727%	9.823%	60.163%	12.829%	27.008%
Grand Total	2,847,515	1,797,865	885,406	164,244	1,119,316	966,891	761,308

# Splits

## Plan: HLS 23RS-248 (Zerinque)

	Total Population	Total White	Total Black	Total Asian	Total American Indian	Total Other	VAP Total	VAP White	VAP Black	VAP Asian	VAP American Indian	VAP Other	Reg Total Dec 2022	Reg White Dec 2022	Reg Black Dec 2022	Reg Other Dec 2022
District 1																
*Jefferson	112,960	75,243	13,595	5,510	1,805	16,807	90,602	63,132	9,852	4,190	1,347	12,081	67,796	55,583	4,666	7,547
Livingston	142,282	116,855	12,658	1,697	3,111	7,961	105,141	88,432	8,136	1,099	2,311	5,163	83,614	74,917	5,601	3,096
St. Tammany	264,570	196,641	38,643	5,774	5,660	17,852	202,228	154,621	26,761	4,075	4,161	12,610	178,514	144,930	21,507	12,077
Tangipahoa	133,157	81,336	41,879	1,474	2,454	6,014	101,491	65,205	29,217	1,100	1,827	4,142	73,728	51,378	19,542	2,808
Washington	45,463	29,943	13,434	216	736	1,134	34,951	23,743	9,732	154	561	761	27,615	18,838	8,104	673
District 1	698,432	500,018	120,209	14,671	13,766	49,768	534,413	395,133	83,698	10,618	10,207	34,757	431,267	345,646	59,420	26,201
	100.000%	71.592%	17.211%	2.101%	1.971%	7.126%	100.000%	73.938%	15.662%	1.987%	1.910%	6.504%	80.699%	80.147%	13.778%	6.075%
District 2																
Allen	22,750	16,327	4,490	246	947	740	17,510	12,751	3,275	182	646	656	11,972	9,324	2,134	514
Beauregard	36,549	29,529	4,649	402	1,052	917	27,489	22,304	3,495	269	773	648	22,335	18,828	2,329	1,178
Bossier	128,746	81,052	32,551	3,492	3,273	8,378	95,876	62,931	22,440	2,448	2,477	5,580	68,849	50,216	14,562	4,071
Caddo	237,848	103,457	119,304	4,034	3,840	7,213	182,407	85,059	86,359	3,008	2,958	5,023	146,718	70,934	68,928	6,856
De Soto	26,812	15,284	9,973	117	740	698	20,440	11,909	7,425	86	557	463	18,708	11,304	6,813	591
Evangeline	32,350	21,354	9,235	241	280	1,240	24,408	16,460	6,483	187	217	1,061	20,777	14,516	5,898	363
Natchitoches	37,515	19,361	15,725	255	861	1,313	29,349	16,010	11,415	198	683	1,043	22,471	12,535	8,944	992
Red River	7,620	4,195	3,106	25	171	123	5,714	3,338	2,164	3	116	93	5,565	3,101	2,383	81
Sabine	22,155	15,036	3,861	94	2,723	441	17,064	12,054	2,655	66	1,970	319	13,846	10,503	1,967	1,376
Vernon	48,750	35,087	7,611	1,442	1,600	3,010	36,261	26,765	5,133	1,074	1,160	2,129	23,573	18,866	2,883	1,824
Webster	36,967	22,735	12,679	208	687	658	28,753	18,144	9,464	154	558	433	22,344	14,698	7,188	458
District 2	638,062	363,417	223,184	10,556	16,174	24,731	485,271	287,725	160,308	7,675	12,115	17,448	377,158	234,825	124,029	18,304
	100.000%	56.956%	34.978%	1.654%	2.535%	3.876%	100.000%	59.292%	33.035%	1.582%	2.497%	3.596%	77.721%	62.262%	32.885%	4.853%
District 3																
Acadia	57,576	44,480	10,864	238	573	1,421	42,943	34,071	7,383	173	400	916	37,412	30,357	6,331	724
Calcasieu	216,785	139,772	59,386	4,702	3,536	9,389	163,166	108,789	41,898	3,359	2,604	6,516	115,402	82,202	28,046	5,154
Cameron	5,617	5,232	125	30	75	155	4,358	4,100	79	23	47	109	4,552	4,381	88	83
Jefferson Davis	32,250	25,066	5,837	183	472	692	24,039	19,121	4,006	111	325	476	19,954	16,339	3,129	486
*Lafayette	207,650	146,592	39,215	6,246	2,978	12,619	157,810	115,617	26,779	4,508	2,239	8,667	132,452	104,698	20,111	7,643
St. Landry	82,540	43,611	35,836	499	636	1,958	61,811	34,209	25,497	353	451	1,301	53,717	29,660	22,675	1,382
Vermilion	57,359	44,477	8,810	1,447	623	2,002	43,012	34,363	5,787	1,037	488	1,337	36,713	30,463	4,962	1,288
District 3	659,777	449,230	160,073	13,345	8,893	28,236	497,139	350,270	111,429	9,564	6,554	19,322	400,202	298,100	85,342	16,760
	100.000%	68.088%	24.262%	2.023%	1.348%	4.280%	100.000%	70.457%	22.414%	1.924%	1.318%	3.887%	80.501%	74.487%	21.325%	4.188%
District 4																
Avoyelles	39,693	25,625	11,678	434	767	1,189	30,578	20,269	8,311	379	570	1,049	22,741	16,019	6,130	592
Bienville	12,981	6,950	5,600	57	207	167	10,073	5,486	4,284	30	162	111	8,698	4,704	3,894	100
Caldwell	9,645	7,646	1,632	51	150	166	7,478	5,969	1,224	46	116	123	5,899	5,024	784	91

# Splits

## Plan: HLS 23RS-248 (Zerinque)

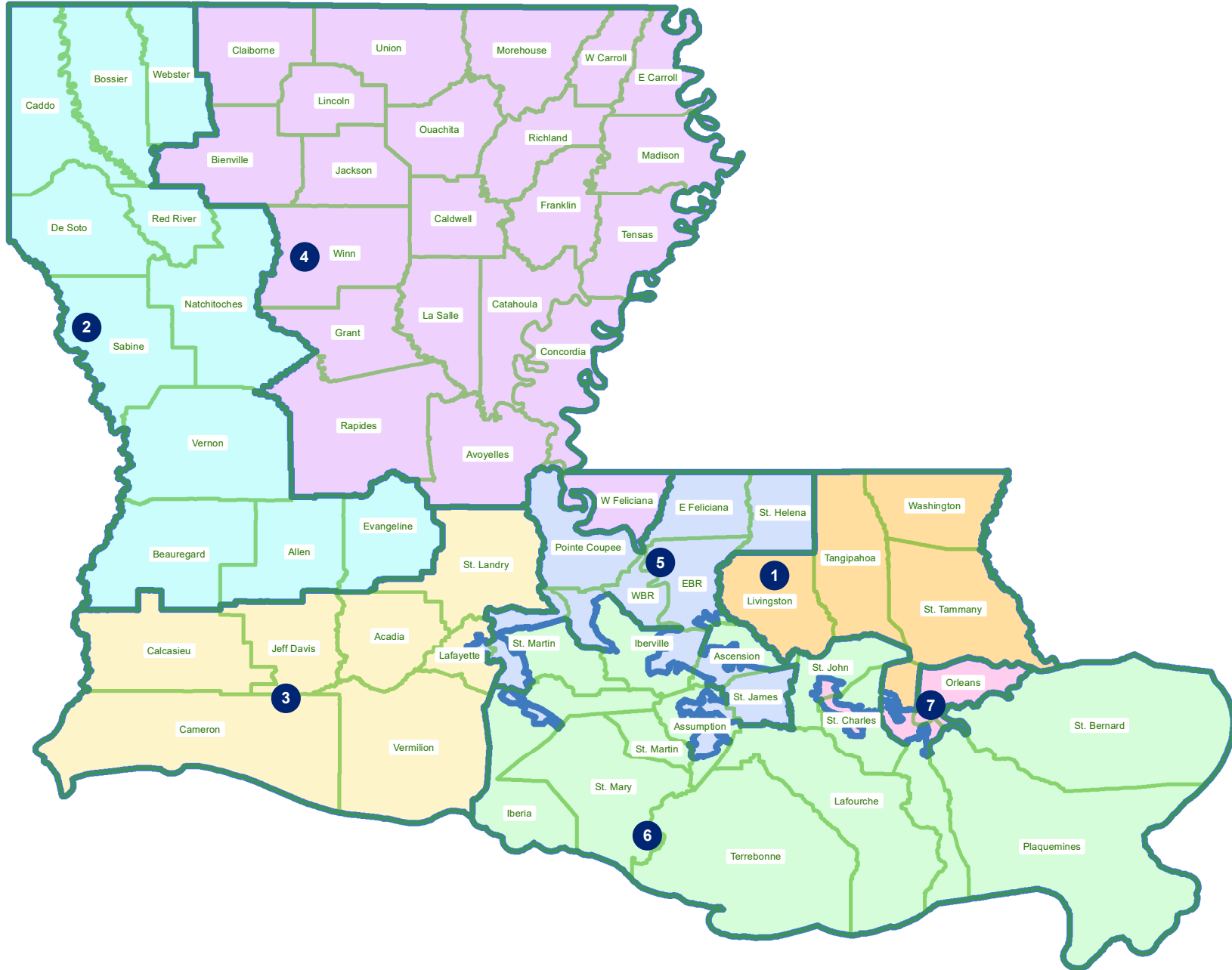
	Total Population	Total White	Total Black	Total Asian	Total American Indian	Total Other	VAP Total	VAP White	VAP Black	VAP Asian	VAP American Indian	VAP Other	Reg Total Dec 2022	Reg White Dec 2022	Reg Black Dec 2022	Reg Other Dec 2022
District 4																
Catahoula	8,906	5,776	2,395	46	119	570	6,951	4,557	1,736	33	87	538	6,332	4,523	1,749	60
Claiborne	14,170	7,263	6,360	88	185	274	11,507	6,258	4,824	55	140	230	8,508	4,617	3,738	153
Concordia	18,687	10,275	7,725	122	233	332	14,217	8,108	5,613	100	167	229	11,766	7,097	4,475	194
East Carroll	7,459	2,054	5,272	29	43	61	5,901	1,773	4,043	19	27	39	4,688	1,277	3,367	44
Franklin	19,774	12,492	6,802	70	205	205	15,028	9,901	4,779	44	153	151	12,973	8,846	4,017	110
Grant	22,169	17,709	3,335	133	644	348	17,527	13,964	2,717	97	507	242	12,583	11,077	1,159	347
Jackson	15,031	9,967	4,166	175	255	468	11,783	7,967	3,125	140	174	377	9,436	6,621	2,620	195
La Salle	14,791	11,348	1,422	283	372	1,366	11,563	8,636	1,065	264	271	1,327	8,630	7,849	615	166
Lincoln	48,396	26,034	19,364	892	662	1,444	38,655	21,306	15,119	744	526	960	25,135	15,495	8,694	946
Madison	10,017	3,475	6,363	20	59	100	7,435	2,906	4,391	9	48	81	7,182	2,430	4,642	110
Morehouse	25,629	12,281	12,484	160	370	334	20,062	10,095	9,300	117	279	271	16,498	8,252	7,965	281
Ouachita	160,368	88,545	61,217	2,788	2,661	5,157	120,200	69,974	42,290	2,118	2,059	3,759	98,322	59,819	34,942	3,561
Rapides	130,023	77,510	42,592	2,428	3,102	4,391	98,792	61,373	30,205	1,786	2,334	3,094	78,303	51,757	23,005	3,541
Richland	20,043	11,785	7,603	83	258	314	15,383	9,338	5,546	66	203	230	13,597	8,420	4,935	242
Tensas	4,147	1,744	2,312	23	26	42	3,235	1,446	1,728	12	23	26	3,434	1,492	1,906	36
Union	21,107	14,460	5,224	62	338	1,023	16,632	11,807	3,861	39	254	671	15,032	10,970	3,599	463
West Carroll	9,751	7,894	1,425	27	180	225	7,532	6,223	1,010	20	136	143	6,968	5,848	1,030	90
West Feliciana	15,310	10,883	3,740	89	225	373	12,783	9,283	2,951	56	174	319	7,408	5,101	2,168	139
Winn	13,755	8,594	3,727	210	263	961	10,906	6,932	2,695	170	207	902	8,260	5,892	2,239	129
District 4	641,852	380,310	222,438	8,270	11,324	19,510	494,221	303,571	160,817	6,344	8,617	14,872	392,393	253,130	127,673	11,590
	100.000%	59.252%	34.656%	1.288%	1.764%	3.040%	100.000%	61.424%	32.539%	1.284%	1.744%	3.009%	79.396%	64.509%	32.537%	2.954%
District 5																
*Ascension	29,917	9,866	17,385	249	349	2,068	22,017	8,028	12,197	191	243	1,358	18,442	7,066	10,504	872
*Assumption	8,562	3,213	5,039	40	70	200	6,698	2,612	3,869	19	58	140	6,077	2,257	3,740	80
*East Baton Rouge	442,609	185,075	211,995	15,631	4,487	25,421	344,545	155,118	155,767	12,035	3,561	18,064	265,490	127,146	122,574	15,770
East Feliciana	19,539	11,516	7,341	91	262	329	16,183	9,740	5,918	61	198	266	13,457	7,868	5,142	447
*Iberia	28,293	9,090	17,229	845	226	903	21,024	7,589	12,015	637	155	628	15,654	5,472	9,544	638
*Iberville	16,464	5,023	10,441	125	93	782	13,047	4,335	7,849	96	71	696	10,597	2,568	7,792	237
*Lafayette	34,103	6,771	25,921	208	232	971	26,065	5,991	19,138	156	148	632	21,196	4,101	16,203	892
Pointe Coupee	20,758	12,395	7,504	107	159	593	16,250	10,108	5,502	91	119	430	14,576	9,274	5,068	234
St. Helena	10,920	4,527	6,031	39	134	189	8,463	3,805	4,371	28	109	150	8,285	3,614	4,534	137
St. James	20,192	9,973	9,762	60	82	315	15,505	7,883	7,297	31	64	230	14,732	7,182	7,335	215
*St. Martin	29,730	16,830	11,605	322	285	688	22,642	13,282	8,441	206	211	502	19,936	11,784	7,727	425
West Baton Rouge	27,199	14,307	11,170	287	326	1,109	20,526	11,146	8,149	209	219	803	16,782	9,684	6,752	346

# Splits

## Plan: HLS 23RS-248 (Zerinque)

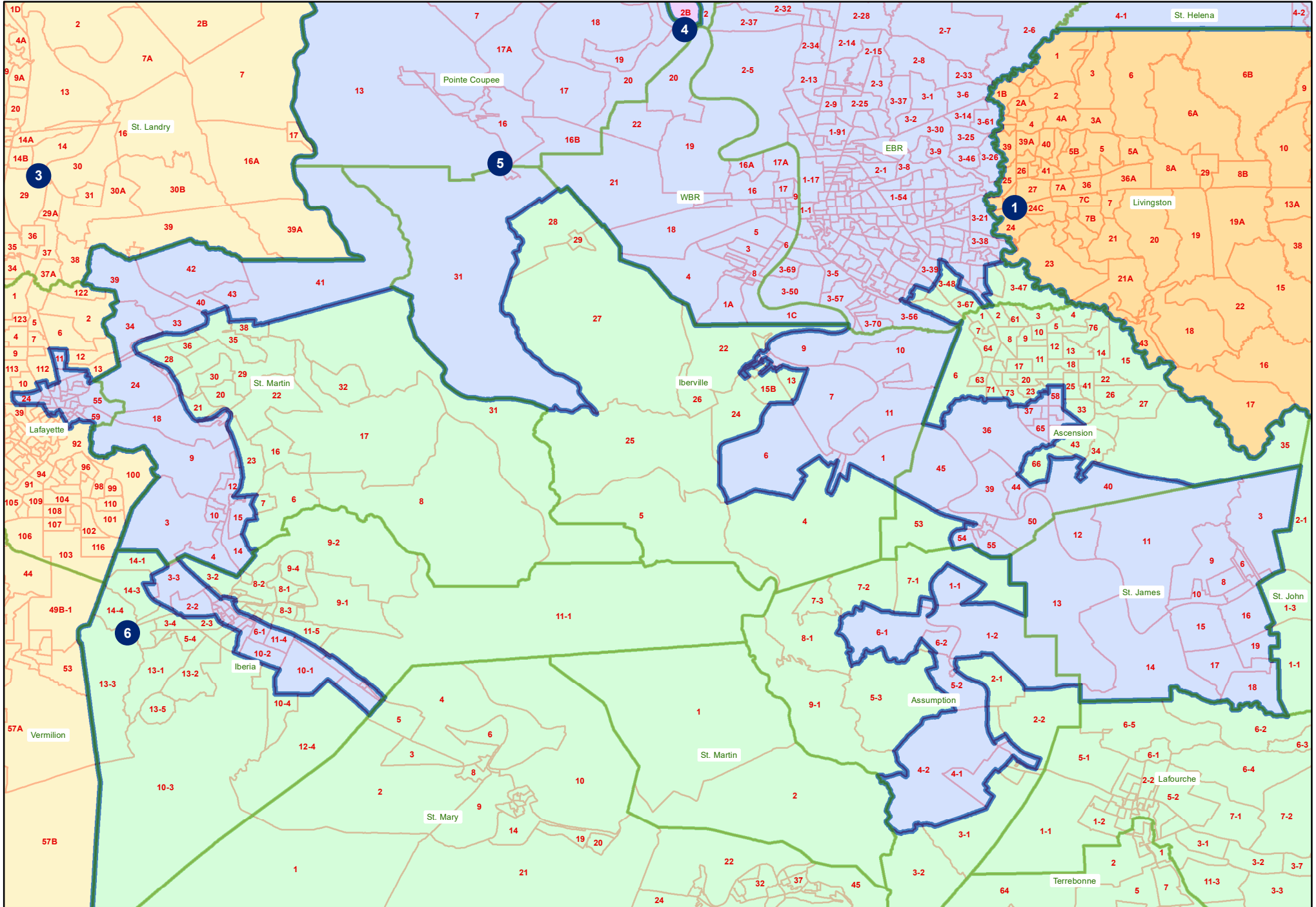
	Total Population	Total White	Total Black	Total Asian	Total American Indian	Total Other	VAP Total	VAP White	VAP Black	VAP Asian	VAP American Indian	VAP Other	Reg Total Dec 2022	Reg White Dec 2022	Reg Black Dec 2022	Reg Other Dec 2022
District 5	688,286	288,586	341,423	18,004	6,705	33,568	532,965	239,637	250,513	13,760	5,156	23,899	425,224	198,016	206,915	20,293
	100.000%	41.928%	49.605%	2.616%	0.974%	4.877%	100.000%	44.963%	47.004%	2.582%	0.967%	4.484%	79.785%	46.567%	48.660%	4.772%
District 6																
*Ascension	96,583	71,275	14,831	2,051	1,655	6,771	69,940	53,108	9,942	1,323	1,147	4,420	61,359	49,507	8,383	3,469
*Assumption	12,477	10,509	1,181	56	188	543	9,918	8,533	838	38	139	370	7,867	7,119	607	141
*East Baton Rouge	14,172	10,994	1,403	794	240	741	11,067	8,763	1,023	564	186	531	11,061	9,229	966	866
*Iberia	41,636	30,116	7,327	1,278	568	2,347	31,767	23,706	5,054	925	426	1,656	27,425	21,964	4,264	1,197
*Iberville	13,777	9,810	3,289	77	181	420	11,039	8,127	2,383	53	150	326	9,826	7,563	2,065	198
*Jefferson	140,194	86,302	21,655	7,368	3,007	21,862	110,659	71,285	15,556	5,510	2,291	16,017	87,767	63,510	11,172	13,085
Lafourche	97,557	71,710	15,855	1,025	4,224	4,743	74,619	56,838	11,077	738	2,777	3,189	55,017	46,085	6,442	2,490
Plaquemines	23,515	14,287	5,428	1,317	697	1,786	17,334	10,856	3,857	925	500	1,196	13,819	9,441	3,114	1,264
St. Bernard	43,764	24,497	12,309	1,381	947	4,630	31,775	18,992	7,944	982	688	3,169	25,676	18,118	5,578	1,980
*St. Charles	26,195	20,538	2,788	434	562	1,873	19,610	15,818	1,843	274	411	1,264	17,272	14,790	1,556	926
*St. John the Baptist	10,251	5,056	4,432	42	136	585	8,122	4,278	3,312	28	109	395	7,169	3,646	3,305	218
*St. Martin	22,037	16,429	4,316	275	254	763	16,762	12,996	2,852	201	202	511	14,465	11,717	2,370	378
St. Mary	49,406	26,949	15,991	835	1,670	3,961	37,521	21,594	11,520	593	1,173	2,641	29,401	18,181	9,624	1,596
Terrebonne	109,580	69,934	23,147	1,743	8,637	6,119	82,505	55,631	15,796	1,239	5,750	4,089	58,431	43,404	10,511	4,516
District 6	701,144	468,406	133,952	18,676	22,966	57,144	532,638	370,525	92,997	13,393	15,949	39,774	426,555	324,274	69,957	32,324
	100.000%	66.806%	19.105%	2.664%	3.276%	8.150%	100.000%	69.564%	17.460%	2.514%	2.994%	7.467%	80.083%	76.022%	16.400%	7.578%
District 7																
*Jefferson	187,627	59,390	90,967	10,146	2,874	24,250	143,393	49,718	66,767	7,992	2,197	16,719	103,473	37,328	52,500	13,645
Orleans	383,997	126,462	218,969	12,856	3,666	22,044	306,196	110,252	166,068	10,520	2,948	16,408	253,471	91,408	139,144	22,919
*St. Charles	26,354	13,012	11,140	403	363	1,436	19,931	10,336	8,047	255	256	1,037	17,023	9,095	6,952	976
*St. John the Baptist	32,226	8,821	20,764	361	329	1,951	24,381	7,344	15,125	295	241	1,376	20,749	6,043	13,474	1,232
District 7	630,204	207,685	341,840	23,766	7,232	49,681	493,901	177,650	256,007	19,062	5,642	35,540	394,716	143,874	212,070	38,772
	100.000%	32.955%	54.243%	3.771%	1.148%	7.883%	100.000%	35.969%	51.834%	3.859%	1.142%	7.196%	79.918%	36.450%	53.727%	9.823%

HLS 23RS-248 (Zeringue)  
Supreme Court - Statewide



# HLS 23RS-248 (Zeringue)

Supreme Court - Lafayette, St. Martin, Iberville, Ascension, Assumption



# HLS 23RS-248 (Zeringue)

Supreme Court - District 7

